

**Biomedical Sciences Doctoral Portal
Class of 2015**



Javeria Aijaz
Punjab Univ., MBBS
Col. of Physicians and Surgeons,
FCPS

**Biomedical Sciences Doctoral
Portal**



Varsha Ananthapadmanabhan
Dr. D Y Patil Vidyapeeth, B.Tech
VCU, M.S.

**Advisor:
Larisa Litovchick
Human and Molecular Genetics**



Alex Belt
Univ. Kentucky Lexington, B.S.

**Biomedical Sciences Doctoral
Portal**



Sri Lakshmi Chalasani
Univ. Foreign Record MD
VCU, M.S.

**Advisor:
Lawrence F. Povirk
Pharmacology and Toxicology**



Robin Chan
JMU, B.S.
VCU, M.S.
**Advisors:
Edwin van den Oord and
Karolina Aberg
Neuroscience**



Jeremy C. Cornelissen
VCU, B.S.C.
**Biomedical Sciences Doctoral
Portal**



James T. DeLigio
U. N. Carolina Wilmington, B.S.
Florida St U., M.S.

**Biomedical Sciences Doctoral
Portal**



Sara Dempsey
Univ. Mississippi, B.S.
VCU, M.S.
**Biomedical Sciences Doctoral
Portal**



Sami Dodhy
VCU, B.S.
VCU, M.S.
**Biomedical Sciences Doctoral
Portal**



Nicole Ekanem
VCU, B.S.
VCU, M.S.
**Biomedical Sciences Doctoral
Portal**



Andrea Elkovich
VCU, B.S.
**Biomedical Sciences Doctoral
Portal**



Ria C. Fyffe
Sweet Briar Col., B.A.
VCU, CERT
VCU, M.S.
**Biomedical Sciences Doctoral
Portal**



Naren Gajenthra Kumar
SRM Univ. Kattankulatathur,
B.Tech

Biomedical Sciences Doctoral
Portal



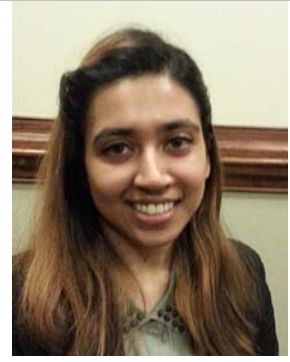
Jacqueline Gribble
Ohio St. Univ. Columbus, B.S.

Biomedical Sciences Doctoral
Portal



Brian Griffin
Univ. of VA, B.S.
VCU, M.S.

Biomedical Sciences Doctoral
Portal



Tamara Haque
VCU, B.S.

Advisor:
John Ryan
Microbiology and Immunology



Michael Kammerman
VCU, B.S.

Biomedical Sciences Doctoral
Portal



Ajinkya S. Kawale
Dr. D Y Patil Vidyapeeth, B.Tech
VCU, M.S.

Advisor:
Lawrence F. Povirk
Pharmacology and Toxicology



Dana Lapato
Univ. of VA, B.S.

Biomedical Sciences Doctoral
Portal



Guangbi Li
Wuchang Univ. of Tech., B.S.
VCU, M.S.

Biomedical Sciences Doctoral
Portal



Nathan F. Naughton
Univ. of Mary Washington, B.S.

Biomedical Sciences Doctoral
Portal



Tanya Puccio
VA Wesleyan Col., B.S.C.

Biomedical Sciences Doctoral
Portal



Danielle Scheunemann
Robert Morris Univ. Pa, B.S.

Biomedical Sciences Doctoral
Portal



Timothy Smith
Longwood Univ., B.S.

Biomedical Sciences Doctoral
Portal



Samantha Spencer
VCU, B.S.
VCU, M.S.

**Biomedical Sciences Doctoral
Portal**



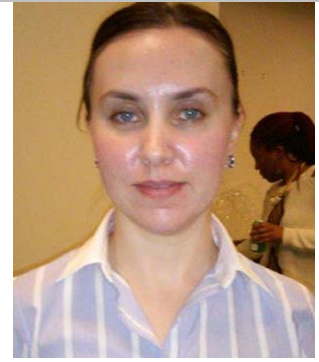
Daniel Stephenson
VCU, B.S.C.

**Biomedical Sciences Doctoral
Portal**



Marcela T. Taruselli
VCU, B.S.
VCU, M.S.

**Advisor:
John Ryan
Microbiology and Immunology**



Liliya S. Tyutyunyk-Massey
Drury Univ., B.A.

**Biomedical Sciences Doctoral
Portal**



Christine Van Duyn
VA Polytech Inst. St U., B.S.

**Biomedical Sciences Doctoral
Portal**



Erin Weese
Univ. Oklahoma, B.S.

**Biomedical Sciences Doctoral
Portal**